

Features

Linde hydrostatic drive system

- Responsive, smooth, precise
- No mechanical wear components
- Robust, well proven in severe applications
- Low maintenance cost
- Long service life



Linde clear-view mast

- Superior visibility
- Full capacity to 256"/268"
- Unmatched residual capacity with attachments

Linde twin pedal travel control

- Instantaneous directional changes
- Precise control without shift shock
- Lower fatigue, improved productivity

Linde Load Control (LLC)

- Effortless load handling with fingertip control
- Precision placement and transfer of loads
- Complete separation of travel and hydraulic functions

Linde truck control

- Automatic engine speed control
- Redundant monitoring systems
- Fully sealed electronic controller



Linde operator compartment

- Unmatched visibility
- Advanced ergonomic design
- Spacious
- Floating, shock mounted cab



Power plant

- Industrial VW LP gas engine
- High torque, 348 lbf at 1600 rpm
- Electronic engine management
- Low emissions
- Dual swing-down LP gas bottles (33 or 44 lbs.)



Linde torsion distribution system

- Reduction of mast distortion up to 30%
- High residual capacity
- Overhead tilt cylinders



For more information on Linde material handling equipment, please contact:

KION North America Corporation
2450 West 5th North Street, Summerville, SC 29483
Phone: (843) 875-8000 Truck Sales Fax: (843) 875-8471
E-mail: trucksales.na@kiongroup.com
www.kion-na.com



LPG Forklift Trucks
13,000 to 17,500 lbs. Capacity
H60T, H70T, H80T, H80T-900, and H80T-1100
SERIES 396-03

Linde Material Handling



Safety

With full loads weighing as much as 17500 lbs. at 43" load center and full capacity up to 256" of lift height—safety is priority number one. The Linde Torsion Support System and mast design are the fundamental reasons for stability when handling wide, swinging loads generating high dynamic forces.

Performance

These trucks are engineered to take care of the really tough jobs. Advanced engine design and Linde hydrostatic drive technology enable the operator to accelerate and decelerate smoothly and without shift-shock, at slow pace or at full speed. Without effort, using the original Linde Load Control, the driver manipulates the load efficiently and quickly in any condition. Precise control of all movements is the key to high performance.

Comfort

Man and machine are perfectly matched on these high capacity forklifts. Designed to the most advanced ergonomic standards, the generously sized driver's cab provides a comfortable work environment. Fully adjustable seat and armrest contribute to minimizing stress and fatigue. Fingertip hydraulic controls, designed into the armrest, add further to the fatigue free operation.

Reliability & Durability

50 years of experience with hydrostatic drive systems are combined with a robust, industrial LP gas engine, the result, utmost reliability. This combination has consistently proven dependable in even the most challenging environments. This machine is effective and cost efficient without equal.

Economic

The original Linde hydrostatic system operates without mechanical transmission, torque converter, clutch, differential axle and conventional brakes. The net effect: low operating cost and increased productivity, a significant advantage especially in high cycle applications.

ANSI: Standard truck meets all applicable mandatory requirements of ANSI/ISO 9500 BSC.1 standards for powered industrial trucks.
NOTE: Performance data may vary due to motor and system efficiency tolerances. The performance depicted represents nominal values obtained under typical operating conditions. Metric dimensions are in millimeters unless otherwise specified.
Linde reserves the right to make improvements and changes in specification or design without notice and without incurring obligation. Please check with your authorized Linde dealer for information on possible updates or revisions.

linde_spec_396t-03 (LP)
USA_v1.1 (012016)



Standard and optional equipment

Standard equipment:

Industrial V6 LP gas engine, 3.6 liter (220 cubic inch) with 96.5 hp
Twin pedal drive system
SE tires
Armrest with Linde Load Control
Hydraulic suspension, high comfort driver seat
Tilttable steering wheel
Hydrostatic power steering
Torsion distribution system
High performance filter system
Comprehensive display

Options:

Single pedal travel control
Tire options, radial, twin, etc..
Special carriages
Integrated sideshifters and fork positioners
Complete cabs
Heating and cooling
Seat options
Lighting options
Various custom options and packages

Many other options available on request

Capacity and mast information*

h1 (in.)	h3 (in.)	Type	Capacity (lb.)	Tilt (°F/°B)
H60T Capacity (lb) @ 24" load center** • 2.5" x 6" x 48" Std taper Class IV forks** • Single SE 355/65 - 15 drive tires**				
107.5	140.0	Simplex	13000	5/9
119.5	163.5	Simplex	13000	5/9
127.5	179.5	Simplex	13000	5/9
141.0	207.0	Simplex	13000	5/9
157.0	238.5	Simplex	13000	5/9
H70T Capacity (lb) @ 24" load center** • 2.75" x 8" x 48" Std taper Class IV forks** • Dual SE 8.25 - 15 drive tires**				
107.5	124.0	Simplex	15000	5/9
119.5	148.0	Simplex	15000	5/9
127.5	163.5	Simplex	15000	5/9
141.0	191.0	Simplex	15000	5/9
157.0	222.5	Simplex	15000	5/9
H80T Capacity (lb) @ 24" load center** • 2.75" x 8" x 48" Std taper Class IV forks** • Dual SE 8.25 - 15 drive tires**				
107.5	124.0	Simplex	17500	5/9
119.5	148.0	Simplex	17500	5/9
127.5	163.5	Simplex	17500	5/9
141.0	191.0	Simplex	17500	5/9
157.0	222.5	Simplex	17500	5/9
H80T-900 Capacity (lb) @ 36" load center** • 2.75" x 8" x 72" Std taper Class IV forks** • Dual SE 8.25 - 15 drive tires**				
107.5	108.5	Simplex	17500	5/9
119.5	132.0	Simplex	17500	5/9
127.5	148.0	Simplex	17500	5/9
141.0	175.5	Simplex	17500	5/9
H80T-1100 Capacity (lb) @ 43" load center** • 2.75" x 8" x 84" Std taper Class IV forks** • Dual SE 315/70 - 15 drive tires**				
107.5	108.5	Simplex	17500	5/9
119.5	132.0	Simplex	17500	5/9
127.5	148.0	Simplex	17500	5/9
141.0	175.5	Simplex	17500	5/9

* For quick reference only, contact factory for detailed ratings.

** Capacity ratings can be affected by changing forks, load center, and/or tires.

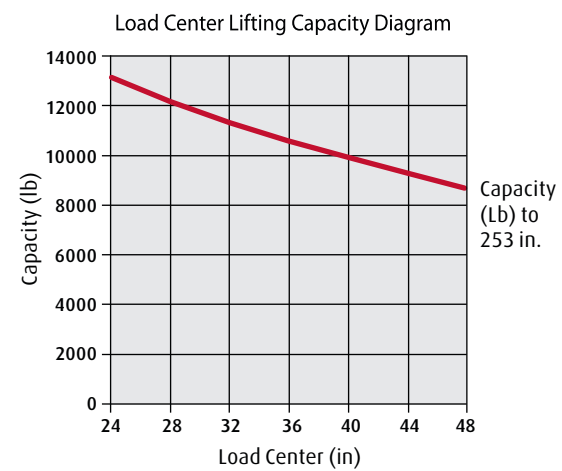




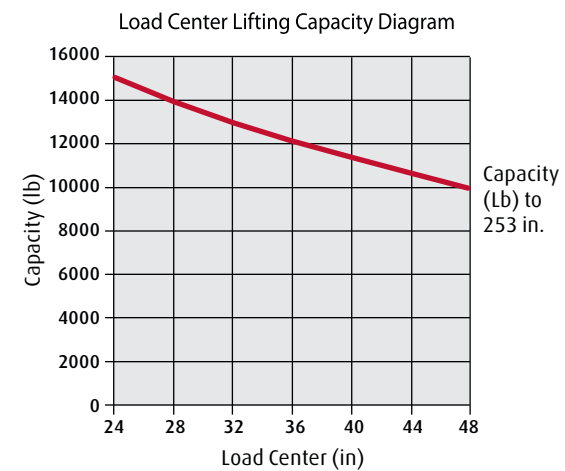
Downrating charts*

Reference SE tires, standard carriage
Class IV forks

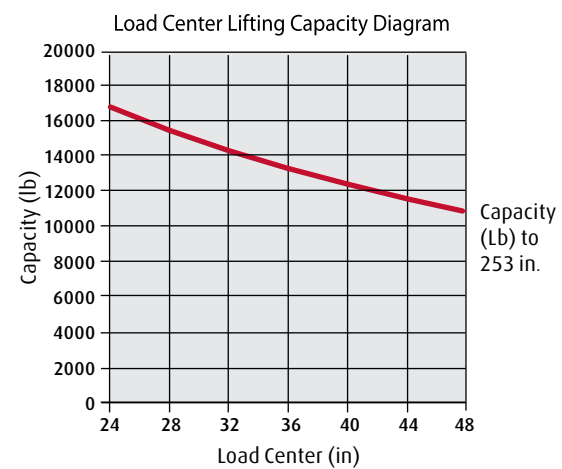
H60T (396-03)



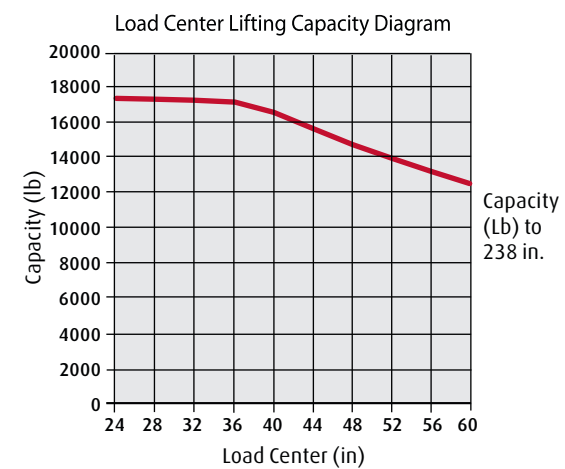
H70T (396-03)



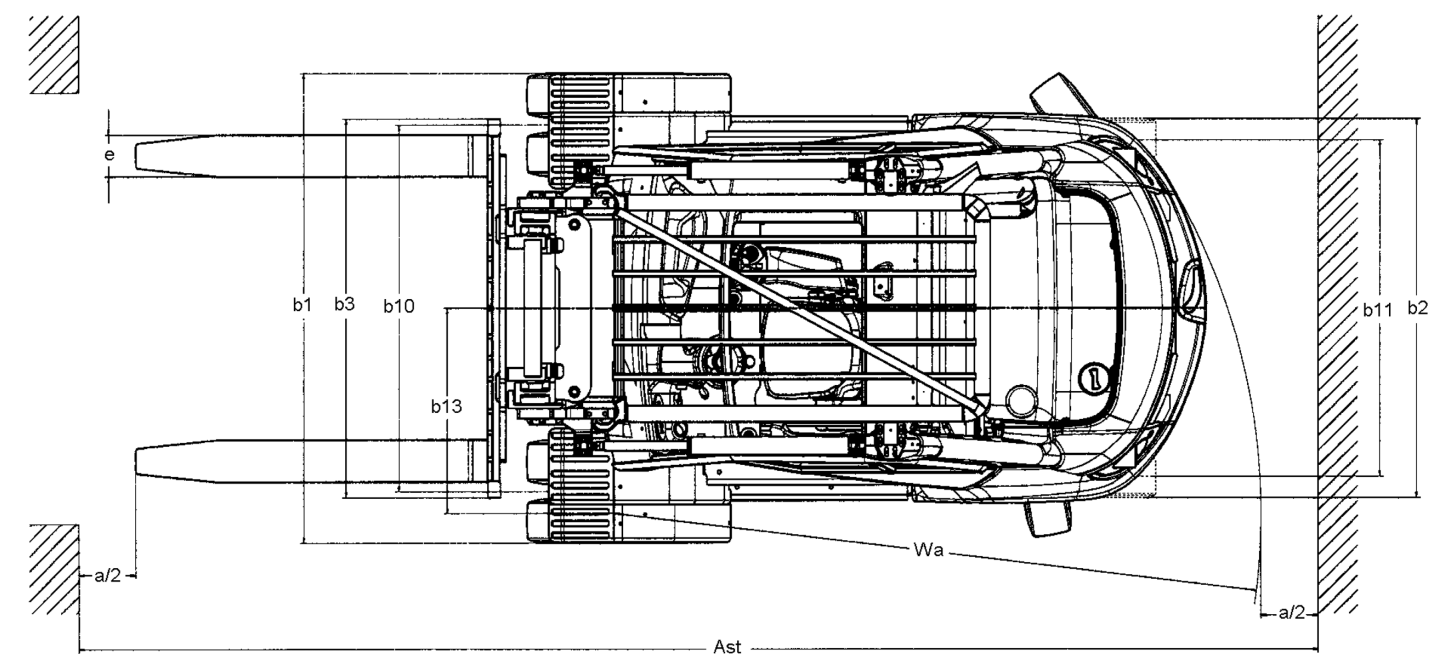
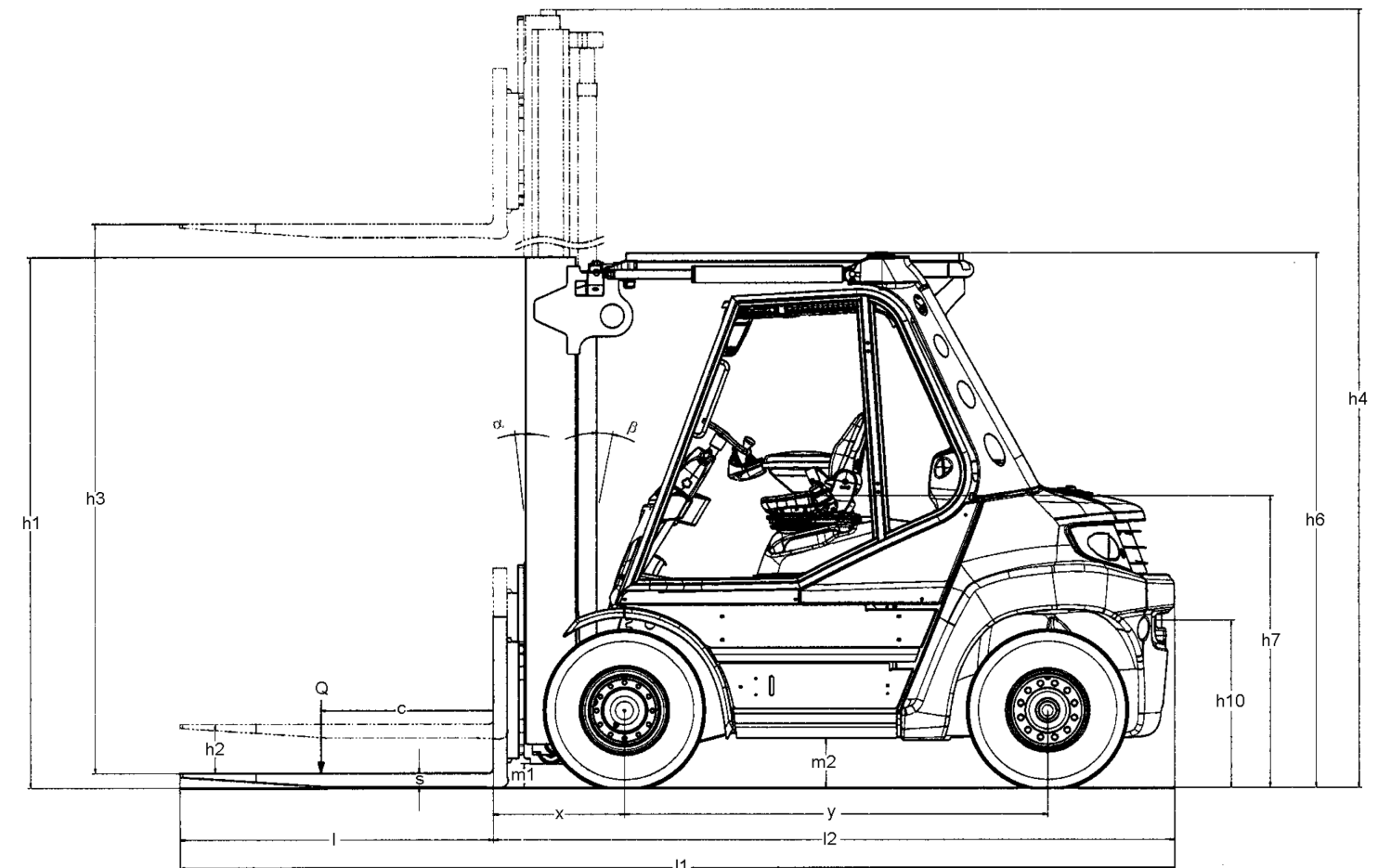
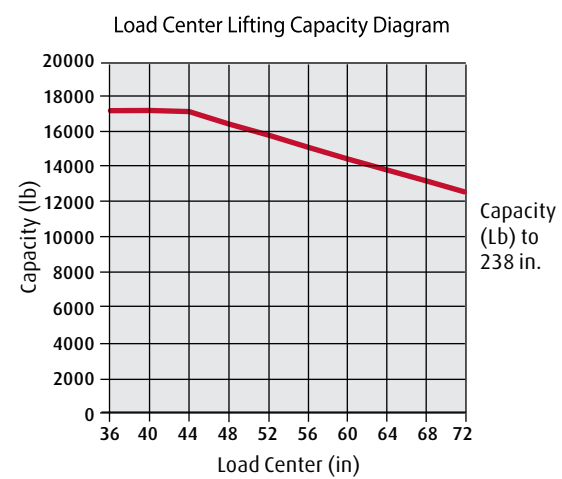
H80T (396-03)



H80T-900 (396-03)



H80T-1100 (396-03)





Technical data (preliminary)

January 2016

SERIES 396-03

Series 396-03 (H60T, H70T, H80T, H80T-900, and H80T-1100)

Characteristics	1.1	Manufacturer			Linde	Linde	Linde	Linde	Linde	1.1
	1.2	Model designation			H60T	H70T	H80T	H80T-900	H80T-1100	1.2
	1.3	Power unit: LP gas			LP gas	LP gas	LP gas	LP gas	LP gas	1.3
	1.4	Operation: rider seated			Seated	Seated	Seated	Seated	Seated	1.4
	1.5	Load capacity	Q lb		13000	15000	17500	17500	17500	1.5
	1.6	Load center	c in		24	24	24	36	43	1.6
	1.8	Load distance (axle center to fork face)	x in		24.8	25.2	25.2	26.4	26.4	1.8
	1.9	Wheelbase	y in		86.6	86.6	86.6	98.8	110.6	1.9
Weight	2.1	Service weight	lb		22114	25086	26918	30712	32514	2.1
	2.2	Axle loading with load, front/rear	lb		30930 / 4412	35062 / 5456	38856 / 5699	43129 / 5221	44948 / 5203	2.2
	2.3	Axle loading without load, front/rear	lb		12511 / 11808	10932 / 14153	11278 / 15639	14460 / 16252	16138 / 16375	2.3
Wheels & Tires	3.1	Tire type - front/rear: C (cushion), SE (cushion super elastic), P (pneumatic)			SE	SE twin	SE twin	SE twin	SE twin	3.1
	3.2	Tire size: front	in		355 / 65-15 ¹⁾	8.25-15 ¹⁾	8.25-15 ¹⁾	8.25-15 ¹⁾	315 / 70-15 ¹⁾	3.2
	3.3	Tire size: rear	in		315/70-15 ¹⁾	315/70-15 ¹⁾	315/70-15 ¹⁾	315/70-15 ¹⁾	315/70-15 ¹⁾	3.3
	3.5	Wheels: number front (x = driven)/rear			2 x / 2	4 x / 2	4 x / 2	4 x / 2	4 x / 2	3.5
	3.6	Track width, front/rear	b10 in		62.75 ²⁾ / 63	68.81 / 63	68.81 / 63	68.81 / 63	69.0 / 63	3.6
	4.1	Mast/fork carriage tilt: forward/backward (simplex mast)	degrees		5° / 9°	5° / 9°	5° / 9°	5° / 9°	5° / 9°	4.1
Dimensions	4.2	Height of mast lowered	h1 in		See mast table	See mast table	See mast table	See mast table	See mast table	4.2
	4.3	Free lift	h2 in		See mast table	See mast table	See mast table	See mast table	See mast table	4.3
	4.4	Lift	h3 in		See mast table	See mast table	See mast table	See mast table	See mast table	4.4
	4.5	Height of mast extended	h4 in		See mast table	See mast table	See mast table	See mast table	See mast table	4.5
	4.7	Height of overhead guard/cab	h6 in		108.11	108.11	108.11	108.11	108.11	4.7
	4.8	Height of seat	h7 in		59.4	59.4	59.4	59.4	59.4	4.8
	4.12	Height of tow coupling	h10 in		32.7	32.7	32.7	32.7	32.7	4.12
	4.19	Overall length	l1 in		185.8	186.2	186.2	221.6	249.5	4.19
	4.20	Length to fork face	l2 in		138.5	138.9	138.9	150.8	163	4.20
	4.21	Overall width	b1 in		74.8	87.8	87.8	87.8	90.5	4.21
	4.22	Fork dimensions	s/e/l in		2.5 / 48 / 6	2.75 / 48 / 6	2.75 / 48 / 8	2.75 / 72 / 8	2.75 / 84 / 8	4.22
	4.23	Fork carriage			4	4	4	4	4	4.23
	4.24	Width of fork carriage	b3 in		71	86	86	86	86	4.24
	4.31	Ground clearance under mast, with load	m1 in		8.2	8.2	8.2	8.2	8.2	4.31
	4.32	Ground clearance, center of wheelbase	m2 in		9.8	9.8	9.8	9.8	9.8	4.32
	4.34	Aisle width (48" long load)	Ast in		205.4	205.7	205.7	213.95	228.5	4.34
	4.35	Outer turning radius	Wa in		125.5	125.5	125.5	138.2	151.6	4.35
	4.36	Inner turning radius	b13 in		41.8	41.8	41.8	48.8	55.5	4.36
Performance	5.1	Travel speed, with/without load	mph		14.4	14.4	14.4	14.4	14.4	5.1
	5.2	Lifting speed, with/without load	fpm		112 / 114	90 / 106	90.5 / 106.3	90.5 / 106.3	90.5 / 106.3	5.2
	5.3	Lowering speed, with/without load	fpm		110 / 104	110 / 104	110 / 104.3	110 / 104.3	110 / 104.3	5.3
	5.5	Drawbar pull, with/without load	lbs		11240 / 7868	11465 / 10341	10116 / 9217	11685 / 11290	12135 / 12262	5.5
	5.7	Gradeability, with/without load	%		30 / 35	27 / 34	25 / 34	23 / 34	22 / 34	5.7
	5.9	Acceleration time to max. speed, with/without load	s		6.4 / 5.4	6.6 / 5.6	6.8 / 5.8	7 / 6	7.2 / 6.2	5.9
	5.10	Service brake			Hydrostatic	Hydrostatic	Hydrostatic	Hydrostatic	Hydrostatic	5.10
IC - Engine	7.1	Engine manufacturer/model			VW 3.6 / CKPA	VW 3.6 / CKPA	VW 3.6 / CKPA	VW 3.6 / CKPA	VW 3.6 / CKPA	7.1
	7.2	Engine output to ISO 1585	hp		96.5	96.5	96.5	96.5	96.5	7.2
	7.3	Rated speed	rpm		2500	2500	2500	2500	2500	7.3
	7.4	Number of cylinders/engine displacement	cu in		6 / 220	6 / 220	6 / 220	6 / 220	6 / 220	7.4
Other	8.1	Drive control			Hydrostatic	Hydrostatic	Hydrostatic	Hydrostatic	Hydrostatic	8.1
	8.2	Working pressure for attachments	psi		3843	3843	3843	3843	3843	8.2
	8.3	Oil flow for attachments	gal/min		25 ³⁾	25 ³⁾	25 ³⁾	25 ³⁾	25 ³⁾	8.3
	8.4	Maximum noise level at driver's ear (to EN 12053)	dBa		76	76	76	76	76	8.4

¹ Other tires optional

² 68.8 with twin tires

³ Less with triplex mast, check factory

